

Appendix 1. Figure extracted from Mosbech, A., R.S. Dano, F. Merkel, C. Sonne, G. Gilchrist and A. Flagstad. 2006b. Use of satellite telemetry to locate key habitats for King Eiders *Somateria spectabilis* in West Greenland, p. 769-776 in G.C. Boere, C.A. Galbraith and D.A. Stroud, eds. Waterbirds around the world. The Stationery Office, Edinburgh, UK, 940 pp.

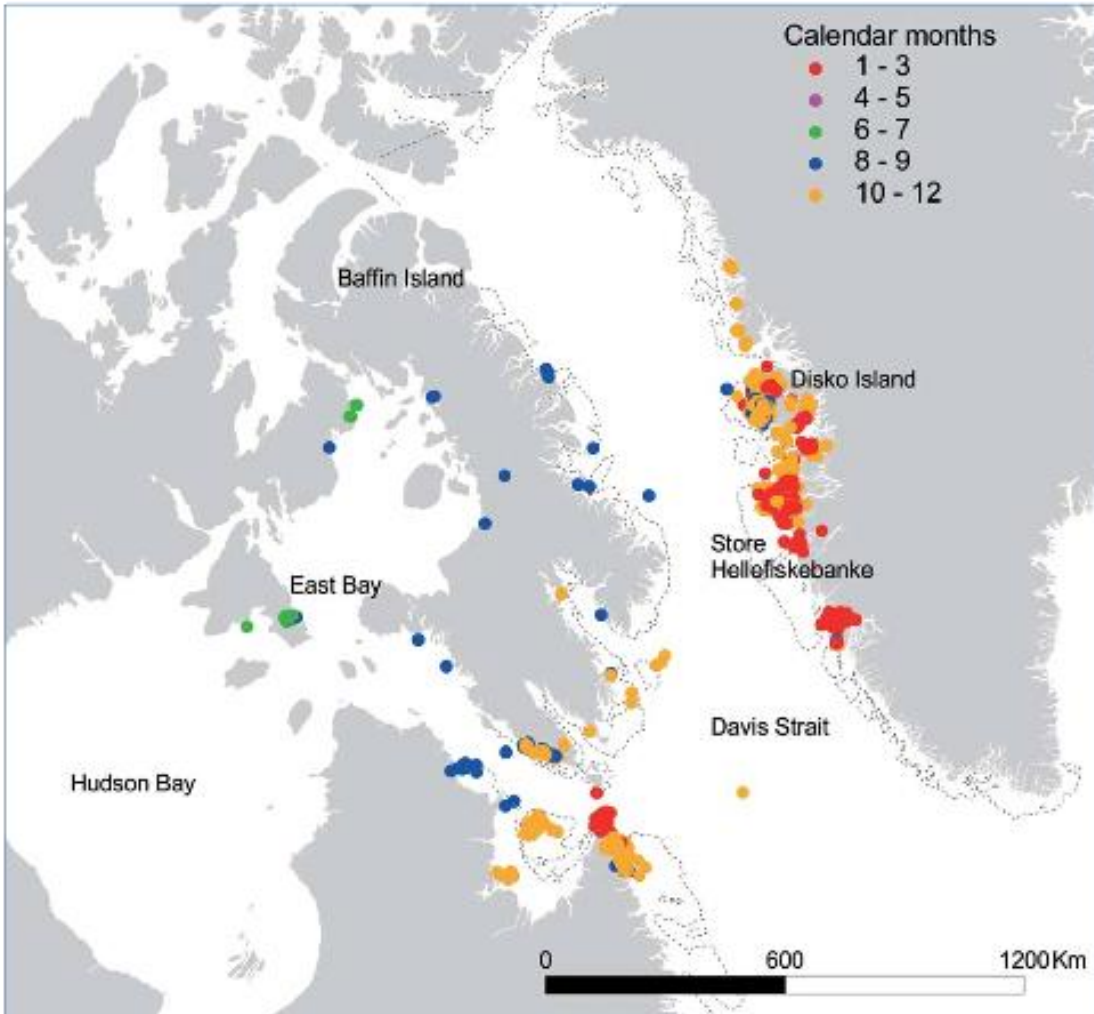


Fig. 2. PTT locations received until 29 March 2004 from 10 King Eiders *Somateria spectabilis* tracked from June 2003 from East Bay, and 16 King Eiders tracked from September 2003 from Disko Island (Argos Standard Locations). The location colour code refers to the calendar month.