



United States Department of the Interior
U.S. GEOLOGICAL SURVEY
Upper Midwest Environmental Sciences Center
2630 Fanta Reed Road
La Crosse, WI 54603

MEMORANDUM

Date: September 29, 2022

To: Kate Martin, U.S. Coordinator, Sea Duck Joint Venture
U.S. Fish and Wildlife Service
1011 E. Tudor Road
Anchorage, Alaska 99503

From: Anna Hess, Acting Center Director, Upper Midwest Environmental Sciences Center

Subject: Memorandum of Compliance for the Inter-Agency Agreement titled '*Visibility correction factors for multiple species of sea ducks and diving duck using an aerial remote sensing approach*', October 1, 2021 to September 30, 2022.

This memorandum documents how the U.S. Geological Survey Upper Midwest Environmental Sciences Center (UMESC) fulfilled tasks associated with the Inter-Agency Agreement for the project titled '*Visibility correction factors for multiple species of sea ducks and diving duck using an aerial remote sensing approach*' during Fiscal Year 2022, October 1, 2021 to September 30, 2022.

**Sea Duck Joint Venture
Annual Project Summary
FY2022 (October 1, 2021 – September 30, 2022)**

Project Title: Visibility correction factors for multiple species of sea ducks and diving ducks using an aerial remote sensing approach (SDJV Project #160)

Principal Investigators:

Luke Fara, U.S. Geological Survey – Upper Midwest Environmental Sciences Center,
lfara@usgs.gov

William Beatty, U.S. Geological Survey – Upper Midwest Environmental Sciences Center,
wbeatty@usgs.gov

Drew Fowler, Louisiana State University – Louisiana Cooperative Fish and Wildlife Research Unit, dfowler@agcenter.lsu.edu

Taylor Finger, Wisconsin Department of Natural Resources – Bureau of Wildlife Management,
Taylor.Finger@wisconsin.gov

Kyle Landolt, U.S. Geological Survey – Upper Midwest Environmental Sciences Center,
klandolt@usgs.gov

Steven Houdek, U.S. Geological Survey – Upper Midwest Environmental Sciences Center,
shoudek@usgs.gov

Benjamin Finley, U.S. Geological Survey – Upper Midwest Environmental Sciences Center,
bfinley@usgs.gov

Janis Ruhser, U.S. Geological Survey – Upper Midwest Environmental Sciences Center,
jruhser@usgs.gov

Mark Koneff, U.S. Fish and Wildlife Service – Division of Migratory Bird Management,
mark_koneff@fws.gov

Partners:

Aaron Wright, Wisconsin Department of Natural Resources – Bureau of Wildlife Management,
Aaron.Wright@wisconsin.gov

Greg Marchel, Wisconsin Department of Natural Resources – Aeronautics Team,
Gregory.Marchel@wisconsin.gov

Project Description (*issue being addressed, location, general methodology*):

This project addresses the following high priority science needs identified by the Sea Duck Joint Venture (SDJV): 1) develop or refine techniques to estimate detection probabilities, misidentification rates, and biases during aerial sea duck surveys and evaluate methods to improve the accuracy and reliability of aerial, boat and ground survey methods, especially aspects relevant to sea and diving ducks and for areas outside of traditional survey areas, 2) contribute to developing and/or evaluating methods for efficiently automating counts of birds in aerial photographs of flocks, including birds with varying distributions and density patterns, and

uniform vs. sexual dimorphic plumages, 3) contribute to testing feasibility of determining age and sex ratios (over a broad range) using ground surveys and/or aerial photos on fall/wintering areas to obtain an index of annual productivity for some species, specifically long-tailed ducks, and 4) contribute to identifying and characterizing attributes of key wintering and staging areas for long-tailed ducks at flyway or continental scale. In addition, the project is expected to address the following: 1) support upper Mississippi River and Great Lakes Region Joint Venture research objectives relating to understanding the importance of wintering locations for bird populations that may depend on habitats within the Joint Venture region, and 2) support Wisconsin Department of Natural Resources efforts to increase surveys of waterfowl during the non-breeding period.

Scope and Location

This study will take place on the Wisconsin waters of Green Bay, identified as an important stopover location to a variety of migrating waterfowl species (Prince et al. 1992; Harris 1998; Wisconsin Department of Natural Resources 2019). Due to the expanse and widespread use by waterbirds throughout the study area, aerial surveys provide the most efficient means of documenting waterbird use and distributions (Harris 1998).

Activities and Methods

Flight missions

Image collection was flown by U.S. Fish and Wildlife Service – Division of Migratory Bird Management (DMBM) pilot, Mark Koneff. The Kodiak aircraft (2008 Kodiak 100) used to conduct collections was equipped with a seven-by-one camera array of Lucid Atlas 31-megapixel CMOS cameras in combination with an Applanix POS AV 510M positioning and navigation system. The sensor array, placed in a 3-axis Somag gyro-stabilized mount, allows images to be geo-referenced. Flight speed was approximately 170 km/hr at an altitude of approximately 305 m above ground level (AGL) that resulted in a 1.0 cm ground sampling distance (GSD) covering an approximately 400 m-wide swath. Imagery was collected along fixed transects 4.8 km apart ($n = 7$ per survey) in Wisconsin waters of Green Bay (Figure 1).

Concurrent ocular surveys were flown during image collection. Ocular surveys were flown with a Wisconsin DNR aircraft (Cessna Skymaster 337) following the Kodiak at a safe distance. Transects for ocular surveys followed the same orientation of the image surveys but were offset 150 m to the left of the Kodiak's image survey line to better overlay the ocular survey area with the image survey area (Figure 1). Ocular surveys were flown at 60 m AGL and at 170 km/hr. During the ocular survey, trained observers, both on the same side of the plane, identified and tallied all waterfowl within a 200 m-wide strip transect following standard waterfowl aerial survey protocols (Canadian Wildlife Service and U.S. Fish and Wildlife Service 1987; Smith 1995; Bowman 2014). Observations were recorded using an integrated GPS voice recording system (SWYM LLC 2021; Scribe User Guide 2021), which allowed for georeferencing of each bird observation along the transect line.

Image analysis

Targets (i.e., birds) in the imagery are being annotated to the lowest taxonomic level and with other attributes (e.g., gender, age, activity) when resolvable. We will be using a mixed method of manual and machine learning algorithms to annotate images in a two-step process. Step one is to eliminate any imagery that is unlikely to contain a target. For this step we will be contracting with HiveAI to annotate a portion of the imagery at a high level (e.g., annotate targets as avian, manmade, and non-avian wildlife). We hope to find additional funding to continue the HiveAI contract to annotate all imagery but will use machine learning algorithms that are being developed if we are unable to locate additional funds. Step two consists of in-house wildlife experts annotating targets to the lowest taxonomic level (e.g., species) with other attributes when resolvable. Any images sorted by machine learning algorithms will be manually verified before comparing to ocular counts. Targets will be georeferenced by Quantaero (developer of the SEABirD imaging hardware), after completion of all annotations, to reduce overlapping instances of the same targets that occur in the endlap and sidelap portions of each image.

Statistical analysis

To estimate visibility correction factors, we will follow previously established methods developed by Cochran (1977) and revised by Smith (1995). Recent research has demonstrated how spatial and temporal variability along with waterfowl density influences visibility correction factor estimates (Lewis et al. 2019). Therefore, we will evaluate differences in visibility correction factor estimates that are derived from covariates that include survey date, transect location, and waterfowl density of transects. Although we expect to encounter a variety of sea duck and diving duck species, we anticipate variable abundances of individual species which could result in differential levels of precision in visibility correction factor estimates (coefficient of variation <0.20). Accordingly, we will identify species that have sufficient data available to develop visibility correction factor estimates that can be used for survey correction.

Project Objectives:

The goal of this project is to determine visibility correction factors for multiple species of sea ducks and diving ducks that migrate through Green Bay. We will use advanced aerial remote sensors to develop visibility correction factors that can be applied to previous and future ocular surveys throughout the Great Lakes region. Specific objectives are to:

1. Collect high-resolution (1-1.5 cm) color imagery using advanced aerial remote sensors.
2. Annotate avian targets from collected imagery to the lowest taxonomic level. Incorporate annotated imagery to existing databases for training machine learning algorithms that would automate detection, enumeration, and classification of targets.
3. Conduct temporally paired fixed-width aerial ocular surveys with remotely sensed surveys allowing for the estimation of visibility correction factors and their uncertainties.

4. Evaluate visibility correction factors derived at variable spatial and temporal scales.
5. Explore the impact of variable waterfowl density on visibility correction factors.
6. Derive baseline relative abundance and spatial distribution estimates for multiple species of waterfowl and waterbirds in the Wisconsin waters of Green Bay using data from both methods.

Preliminary Results (*include maps, photos, figures/tables as appropriate*):

Flight missions

A total of 2.5 flight missions were conducted during November and December 2021. The first flight mission on 09 November 2021 was cut short due to transponder failure (safety equipment) in one of the aircraft, which resulted in only four of seven flight lines being flown. A total of 46,416 images were collected during the first flight mission. The second flight mission (10 November 2021), and third flight mission (01 December 2021) resulted in 71,714 and 67,989 images, respectively. Table 1 provides information on images captured on and off transect per mission. Table 2 provides ocular counts for each of the missions.

Image analysis

We are developing a workflow that is efficient in handling the number of images (186,119) collected during these missions. One of the main issues with this is eliminating imagery that contains no targets (e.g., images that don't contain avian targets), which can be >96% (Normandeau Associates Inc. 2018). Having an efficient workflow will save valuable time for annotators, focusing resources on determining species of an individual target.

Project Status (*e.g., did you accomplish objectives, encounter any obstacles, what are your future plans*):

Flight missions

Flight missions are considered complete. Although we originally planned to conduct seven missions, four in the fall and three in the spring, we were unable to do so due to changes in personnel within the U.S. Fish and Wildlife Service –DMBM. Leftover funds from flight missions, totaling \$7,943, are being applied to a contract with HiveAI (a private group already under contract with DMBM) to locate and label targets with high level annotations (e.g., bird, manmade, non-bird wildlife). High-level annotations and eliminating imagery lacking avian targets will greatly expedite annotating targets to lower levels (e.g., species) by in-house wildlife experts. Flight results, based on GPS data from both planes, indicates that we had a good amount of overlap between the remotely sensed and ocular survey data (Figure 2). Environmental conditions were considered good to excellent (e.g., high cloud-cover that reduces glare) during all missions. Imagery collected during the missions was darker than anticipated; however, we still feel that most avian targets can be annotated to the species level (Figure 3).

Image analysis

We are evaluating the most efficient means of sorting through the large amount of imagery collected during the flight missions. Potential options include using off-the-shelf algorithms to locate targets, using contractors to identify targets, or having species-level annotators go through all imagery. The current best option seems to be using a contractor, HiveAI, to go through imagery and annotate targets to higher levels; however, we only have limited funds to evaluate the effectiveness of this method (i.e., we don't have funds to do this for all the images collected). Once targets are identified, lower-level annotations (e.g., species) will be applied by species experts (e.g., USGS staff).

Statistical analysis

We plan to start statistical analysis following image annotation. However, we may evaluate using double observer methods with the ocular survey data only until annotations are complete.

Project Funding Sources (US\$). Complete only if funded by SDJV in FY22. This is used to document: 1) how SDJV-appropriated funds are matched, and 2) how much partner resources are going into sea duck work. You may include approximate dollar value of in-kind contributions in costs. Add rows as needed for additional partners.

SDJV (USFWS) Contribution	Other U.S. federal contributions	U.S. non-federal contributions	Canadian federal contributions	Canadian non-federal contributions	Source of funding (name of agency or organization)
\$155,115	\$9,248	\$11,240			

Total Expenditures by Category (SDJV plus all partner contributions; US\$). Complete only if project was funded by SDJV in FY22 total dollar amounts should match those in previous table.

ACTIVITY	BREEDING	MOLTING	MIGRATION	WINTERING	TOTAL
Banding (include only if this was a major element of study)					
Surveys (include only if this was a major element of study)				\$33,457	
Research				\$142,146	

Literature Cited:

- Bowman, T. D. 2014. Aerial Observer's Guide to North American Waterfowl. USFWS publication FW6003. Denver, CO, USA.
- Canadian Wildlife Service and U.S. Fish and Wildlife Service. 1987. Standard Operation Procedures [SOP] for Aerial Waterfowl Breeding Ground Population and Habitat Surveys in North America; revised; unpublished report.
- Cochran, W. G. 1977. Sampling techniques. Third edition. Wiley, New York. 428 pp.
- Harris, V. A. 1998. Waterfowl Use of Lower Green Bay Before (1977-78) and After (1994-97) Zebra Mussel Invasion. MSc Thesis. University of Wisconsin – Green Bay. 97 pp.
- Lewis, T. L., M. A. Swaim, J. A. Schumtz, and J. B. Fischer. 2019. Improving population estimates of threatened spectacled eiders: correcting aerial counts for visibility bias. *Endangered Species Research* 39:191-206. DOI: 10.3354/esr00959.
- Normandeau Associates Inc. 2018. Digital aerial baseline survey of marine wildlife in support of offshore wind energy - First annual report 2016-2017. 120 pages.
- Prince, H. H., P. I. Padding, and R. W. Knapton. 1992. Waterfowl use of the Laurentian Great Lakes. *Journal of Great Lakes Research* 18(4):673-699.
- Scribe User Guide. 2021. Scribe version 3.0.11
- Smith, G. W. 1995. A Critical Review of the Aerial and Ground Surveys of Breeding Waterfowl in North America. U.S. Department of Interior Biological Science Report 5, Washington, D.C.
- SWYM, LLC. 2021. FWS H2 User Guide - Rev: 1.3.
- Wisconsin Department of Natural Resources. 2019. Wisconsin Waterfowl Surveys. <https://dnr.wi.gov/topic/WildlifeHabitat/wfsurveys.html>.

Table 1. Total number of images captured, and number of images captured along transects for surveys flown over Wisconsin waters of Green Bay during November and December 2021.

Date	Total number of images collected during flight mission	Number of images collected along transect that will be used in future analyses ¹
09 Nov 2021	46,416	43,585
10 Nov 2021	71,714	67,100
01 Dec 2021	67,989	65,442

¹Imagery that is considered on-transect extends fully onto the shoreline (southwest end of transects), past the Wisconsin state boundary (northeast end of transects) and contains ‘S-turns’ that are needed to keep the inertial measurement unit (IMU) of the camera system oriented.

Table 2. Raw total counts of waterfowl by species for ocular aerial surveys conducted over the Wisconsin waters of Green Bay during November and December 2021. Counts are provided for each observer during each mission.

<u>Waterfowl Species Identified during Ocular Counts</u>													
Date	Observer	Unidentified Swan Species	Canada Goose (<i>Branta canadensis</i>)	Mallard (<i>Anas platyrhynchos</i>)	Unidentified Scaup Species	Canvasback (<i>Aythya valisimeria</i>)	Bufflehead (<i>Bucephala albeola</i>)	Common Goldeneye (<i>Bucephala clangula</i>)	Unidentified Goldeneye	Long-tailed Duck (<i>Clangula hyemalis</i>)	Unidentified Scoter Species	Common Merganser (<i>Mergus merganser</i>)	Total Waterfowl Observed
09 Nov 21	Observer1	-	15	25	3,888	-	5	332	-	53	-	159	4,477
	Observer2	-	20	32	2,660	-	6	5	-	119	-	122	2,964
10 Nov 21	Observer1	8	144	89	4,099	-	4	479	-	55	-	176	5,054
	Observer2	-	-	168	5,216	1	4	-	-	13	-	87	5,489
01 Dec 21 ¹	Observer1	7	525	308	6,641	-	9	200	-	17	6	108	7,821
	Observer2	4	75	101	9,581	-	8	-	25	12	-	7	9,813

¹Recording harnesses for both observers had issues during this flight mission and a few counts may have been missed or lack GPS information.

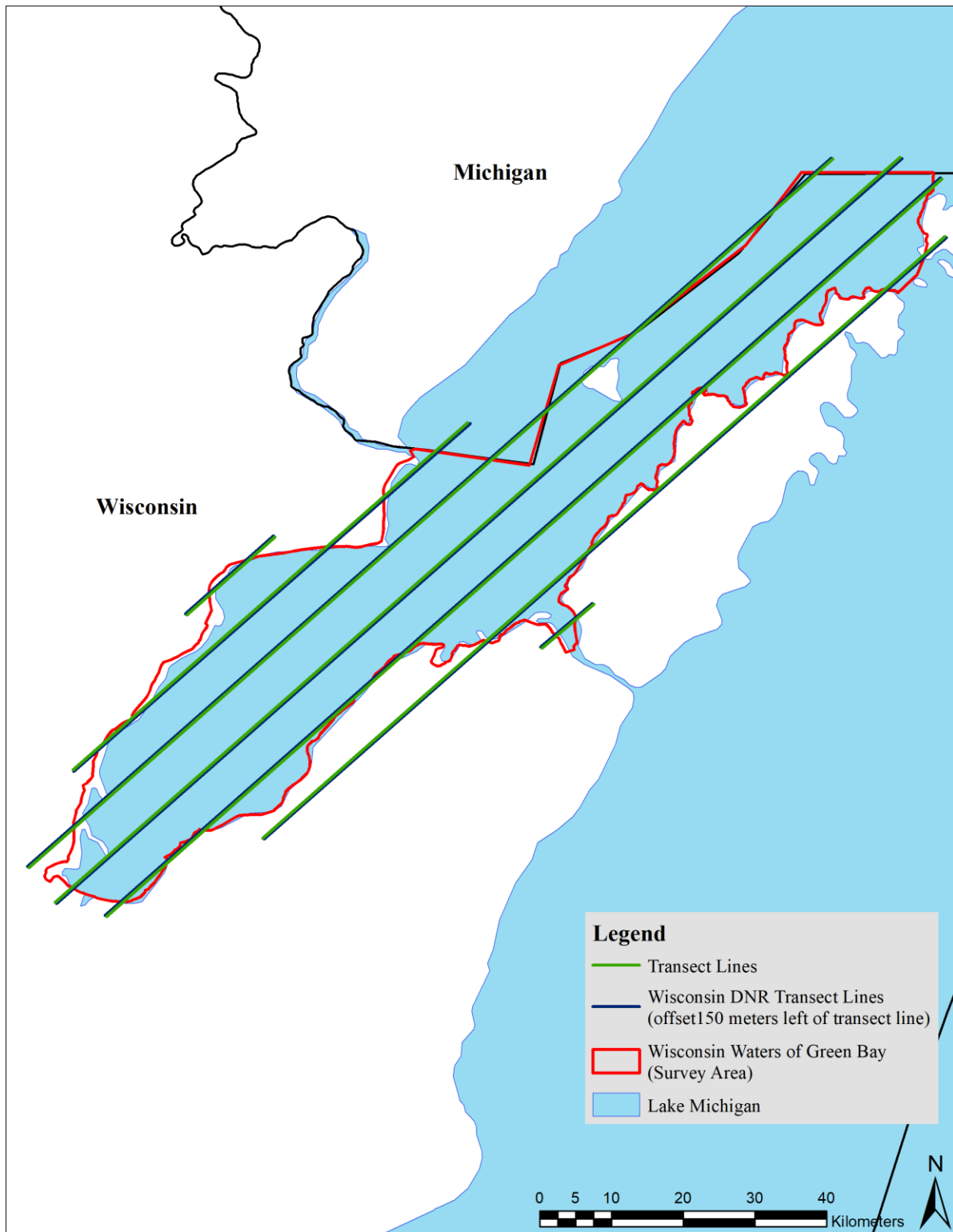


Figure 1. Seven transect lines flown by U.S. Fish and Wildlife Service aircraft with remote sensing capabilities (green lines) and those flown by Wisconsin Department of Natural Resources ocular survey plane (dark blue lines; offset 150 meters left of remote sensing lines) during surveys in November and December 2021.

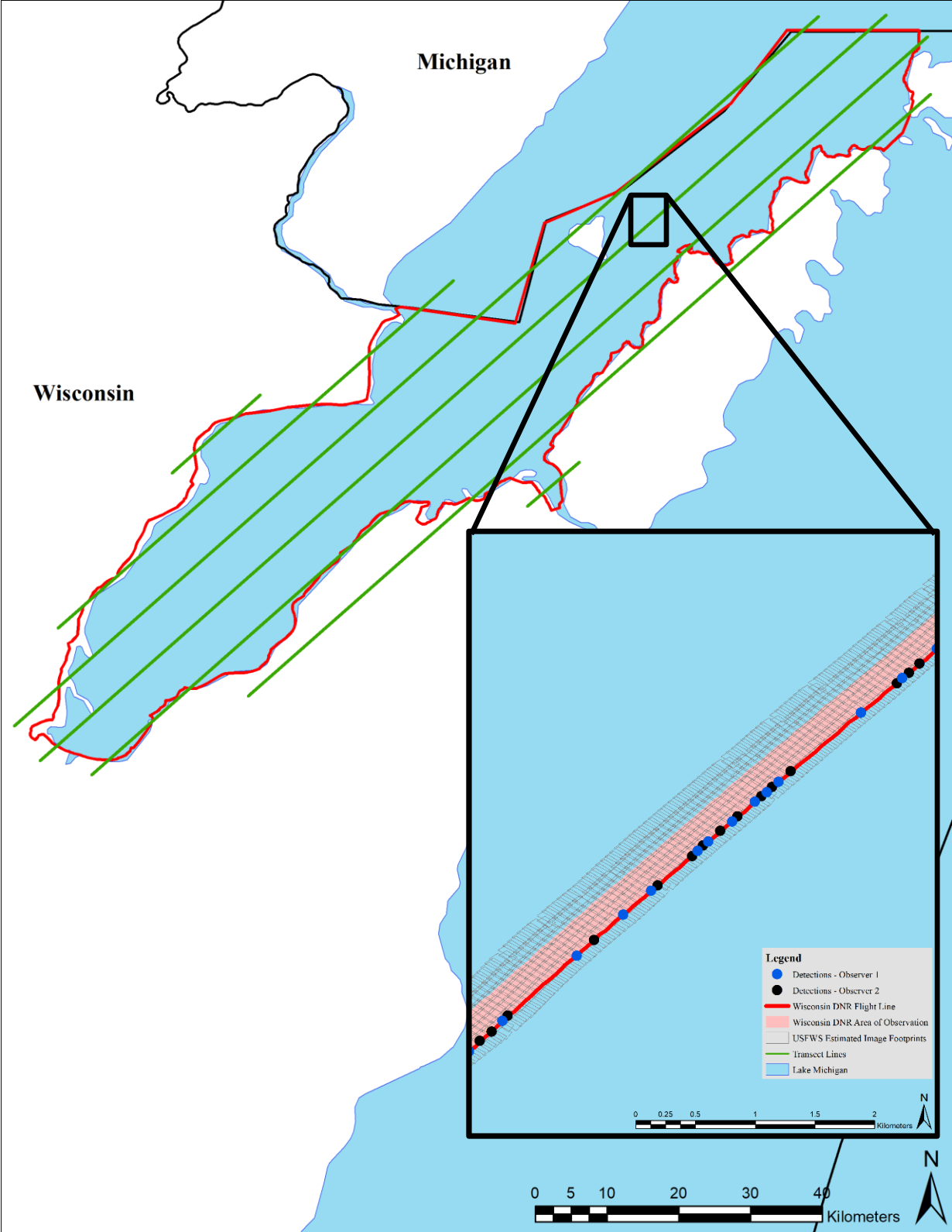


Figure 2. Example of the overlap achieved between the image survey (gray squares) and ocular survey (pink band) during the 09 November 2021 flight mission.

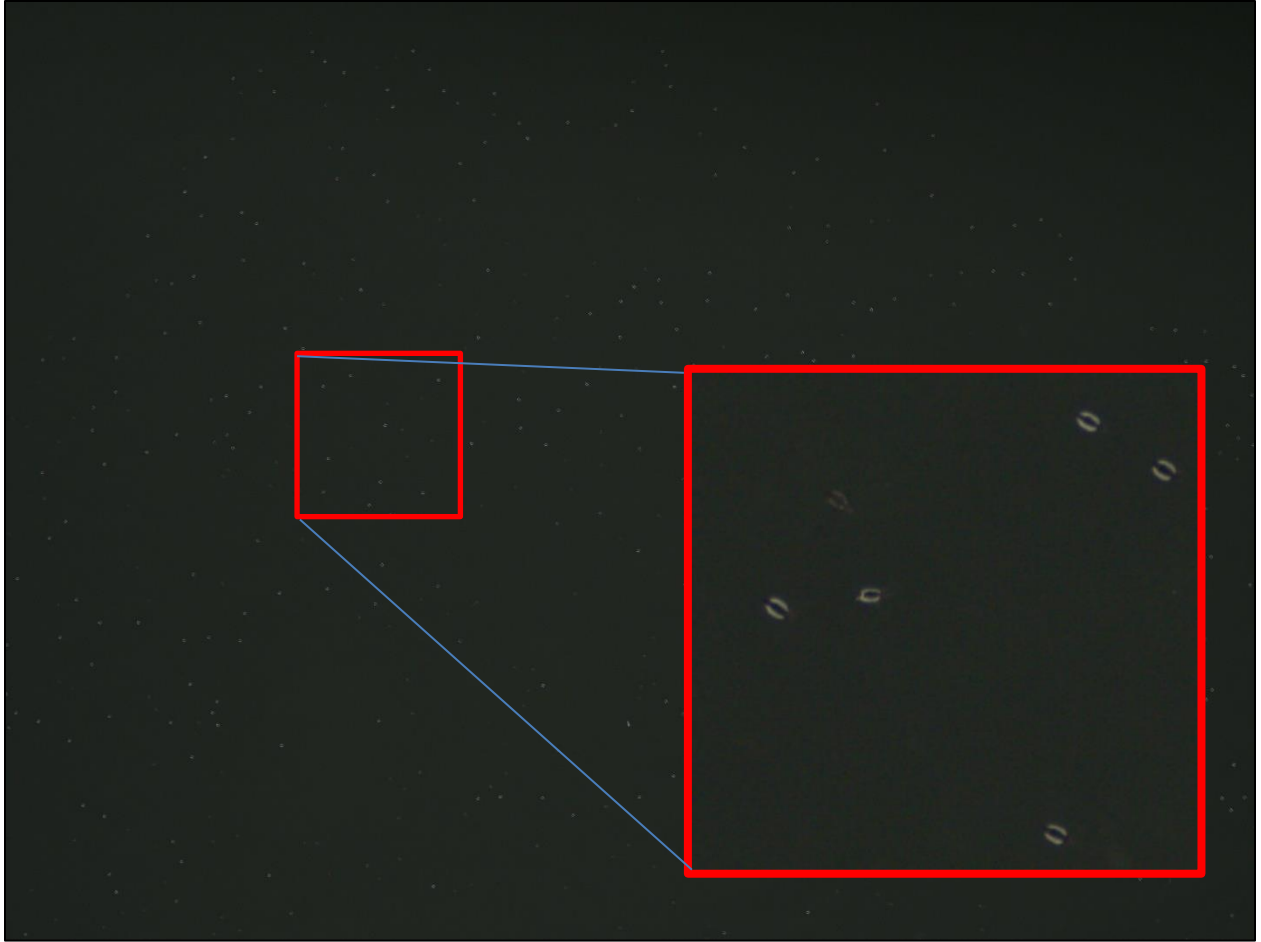


Figure 3. A single frame (e.g., parent image) from camera number two taken on 10 November 2021 captures a large flock of goldeneye. Zoomed in area shows individual targets more closely, which allows species level classification.